

WEST 1/4 CORNER OF  
SECTION 35, TOWNSHIP 48  
SOUTH RANGE 42 EAST  
TND. 11 1/2" IRON PIPE  
DESCRIBED ON CCR  
103579

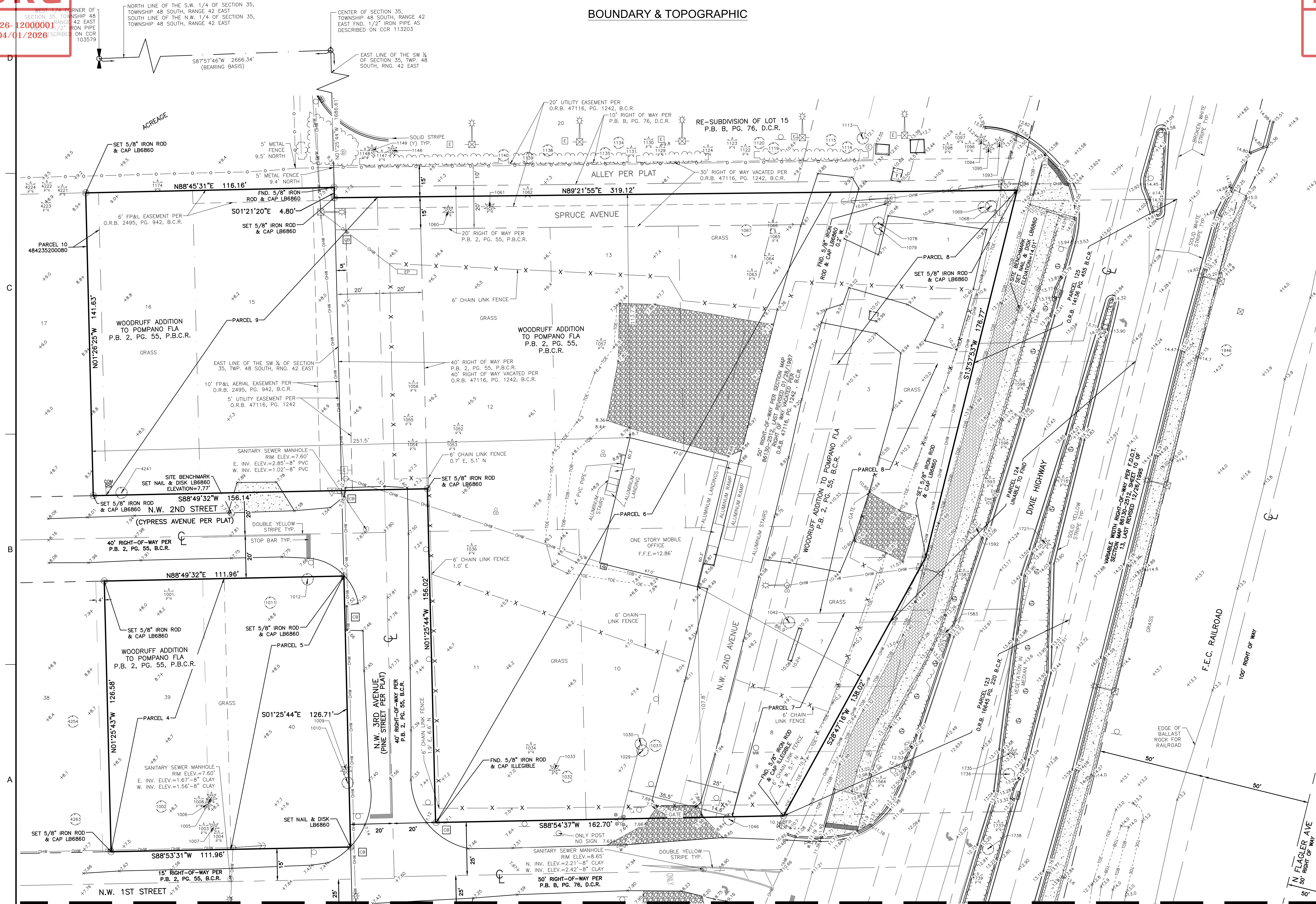


PZ26- 12000001  
05/20/2026

301 East Atlantic Blvd.  
Pompano Beach, FL 33060  
PH: (954) 788-3400

Florida Engineering Business License: CA7928  
Florida Surveyor and Mapper Business License: LB6860  
Florida Landscape Architecture Business License: LC26000457

## BOUNDARY & TOPOGRAPHIC

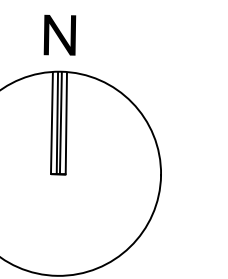


MATCH LINE "A"  
(SEE SHEET 4)

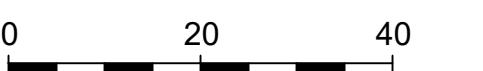
MATCH LINE "A"  
(SEE SHEET 3)

[illegible]

DATE:	06/24/25
DRAWN BY:	ZPB
CHECKED BY:	DAS
FIELD BOOK:	1203



GRAPHIC SCALE



SCALE: 1" = 20'

NOTE: PRINTED DRAWING SIZE  
MAY HAVE CHANGED FROM  
ORIGINAL. VERIFY SCALE USING  
BAR SCALE ABOVE.

DOWNTOWN  
POMPANO  
CITY HALL SITE

RP  
DEVELOPMENT  
LLC

SHEET TITLE

# BOUNDARY & TOPOGRAPHIC SURVEY

SHEET  
NUMBER 2 OF 4

PROJECT NUMBER	15083.00
----------------	----------

.....